



Fielding School of Public Health

Executive Programs in Health Policy & Management

Quarterly Update – Fall 2025

The latest news about ExecHPM students, faculty, and alumni.



A LETTER FROM THE DIRECTOR

We are off to a wonderful start of the new academic year. I'd like to congratulate the Summer Quarter MHA students who just completed their capstone projects and all of their coursework for their MHA degrees. Their last day of class was September 12th and we look forward to welcoming them back to campus for the 2026 Commencement next June.

I want to take this opportunity to thank Monica Boerger for the immense contributions she has made to the EMPH Program as the Student Affairs Officer over the last few years. We will miss her terribly, but we wish her much success as she starts her MBA Program at CSULB. In the same breath, I am so happy to welcome Johanna Arias, M.Ed., to the team as the new EMPH SAO. She recently graduated from the USC Rossier School of Education with a Master of Education in Educational Counseling, and she's already making strides in her new role with us.

I'd also like to introduce our brand-new cohort of Executive MPH students, who started the program on August 22nd. Welcome Devon Anderson, Monique Araya, M.D., Lauren Garcia, Kisa Hilliard, Alfonso Iniguez, Isabella McShane, Blake

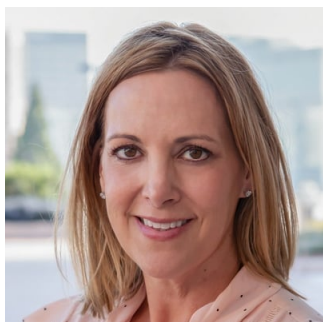
Owens, Joelle Ragland, Andy Short, Veronica Mae Tayo, Suini Torres, and Wei Zhao – on their way to becoming the 30th graduating class of the EMPH Program, the Class of 2027.

I have a few faculty announcements. First, I'd like to thank Tom Armentrout-Wiswall and Dr. Jennifer Wortham for their years of teaching, guiding, and mentoring students in the EMPH Program. Tom was part of the 2016 graduating class and has been teaching Healthcare Finance for the last five years. Also a graduate of the EMPH Program, Jennifer Wortham has been involved with the program for many years and has been teaching Healthcare Quality and Performance Management for the past 10 years. Although they aren't teaching this year, we're happy they will continue to stay connected and be involved with the program. Dr. Yvonne Flores is unable to teach this year as she focuses on her research. And, finally, we welcome Linda Horner to the EMPH Program to teach Healthcare Finance; and Dr. Matt Beymer is joining EMPH to teach Epidemiology. Both Linda and Matt have been teaching in the MHA Program for the last year, so we are thrilled to welcome them to EMPH.

I encourage you to follow us on social media. You can find all our channels on [Linktree](#). And you'll hear from us again in the new year with our Winter Quarterly Update.

I hope everyone has a productive Fall Quarter.

All my best,



Kyle Sullivan, MSW
Executive Director, Executive Programs in HPM

IMPORTANT DATES

Info Sessions

Please spread the word about our upcoming online Info Sessions. It's a great opportunity for interested applicants to learn about our programs in a live Q&A webinar that covers program curriculum, admissions requirements, and application materials.

EMPH Info Sessions:

Wednesday, October 8, 2025, 5pm PT

Wednesday, November 5, 2025, 5pm PT

Wednesday, December 3, 2025, 12pm PT

[REGISTER](#)

MHA Info Session:

Thursday, October 16, 2025, 12:00pm PT

[REGISTER](#)

EMPH Priority Review of Applications Deadline:

February 1, 2026

Those who submit their EMPH application by February 1st will receive priority consideration for scholarships and a place in our Fall 2026 Cohort.

Review the EMPH [Admissions Requirements](#).

The [UCLA Grad Portal](#) is open and we are now accepting applications.

EMPH Fall Quarter 2025:

Classes began Friday, August 22, 2025

MHA Fall Quarter 2025:

Classes began Monday, September 22, 2025

MHA Fall Quarter 2025 Immersion:

Thursday, October 23 – Saturday, October 25, 2025

Reminder: MHA Immersion I and II are required courses in the curriculum. You must enroll in the course to participate.

MHA Winter Quarter 2026:

Application Deadline is

Monday, November 17, 2025. [APPLY NOW](#)

Classes begin Monday, January 5, 2026



HPMSA Alumni Mixer: October 17, 2025

The Annual HPMSA Alumni Mixer is Friday, October 17th, 5PM-8PM at UCLA Faculty Club Sequoia Room. Please join for an evening of networking and community with the HPM students, alumni, and faculty. Appetizers and refreshments will be provided. [RSVP](#) by October 7.

Please contact hpmsasocial@gmail.com with any questions. RSVPs are required to attend. Those who RSVP and attend will be entered into a raffle for a new set of AirPods.

Photo | HPMSA Alumni Mixer 2024: (L to R) EMPH Students Maya Camacho, Kennedy Anderson, Emily Brown, Trishna Singh, Maite Medina, Marina Martinez



Paul Torrens Health Forum: October 29, 2025

Please join MHA Program Director and UCLA Center for Healthcare Management Director Dr. Laura Erskine for the next Paul Torrens Health Forum, “The Cost of Cuts: Who Pays When Medicaid Shrinks?” and a light networking reception on Wednesday, October 29, 2025, at 5:30 PM, at the Tamkin Auditorium*, located in the Ronald Reagan UCLA Medical Center.

Featured Speakers:

Stephanie Cohen, VP of Government & Industry Relations, Cedars-Sinai

Tim Murphy, VP & Treasurer of Finance, Sharp HealthCare

Dr. Mitesh Popat, CEO, Venice Family Clinic

Moderated by Dr. Nadereh Pourat, Professor at UCLA Fielding School of Public Health

[REGISTER](#)

**This is an in-person event. Recordings of the Health Forums are available several days after the event on [UCLA Fielding's YouTube page](#).*



Premier Sponsorship and Case Study by:

UCLA Health

UCLA Center for Healthcare Management Case Competition 2026

Registration for the UCLA Center for Healthcare Management Case Competition closes November 10, 2025. [Learn more.](#)

FACULTY

Executive HPM draws on the distinguished faculty, programs, and academics of the nationally renowned UCLA Fielding School of Public Health. Courses are taught by leading practitioners and researchers in the field of public health, health policy, and healthcare management, as well as faculty from UCLA's other graduate schools and management-related fields. Their expertise spans clinical practice, applied research, policy analysis, entrepreneurship, and consultation at the local, national, and international level.



We thank **Tom Armentrout-Wiswall**, MPH, MBA, a graduate of the EMPH Program (Class of 2016), for his five years teaching in the EMPH program. We wish him much success in his future endeavors as we welcome **Linda Magara Horner** (pictured above) to EMPH. A Partner at Uplifting Capital, an impact investment firm specializing in constructing private asset portfolios for individuals and institutions, Linda has been teaching “Healthcare Strategy” in the MHA Program for the past year and beginning this quarter, we are thrilled to announce that she is teaching Healthcare Finance in EMPH. Linda holds an MBA from the Tuck School of Business at Dartmouth College.



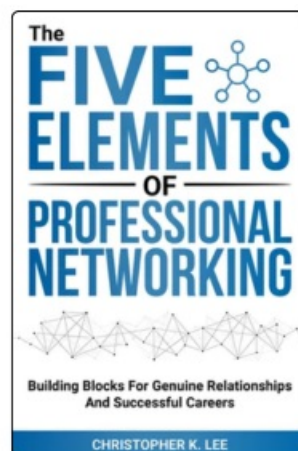
Dr. Matt Beymer (pictured above) is joining the EMPH Program to teach Epidemiology! Matt has worked for the past seven years as a statistician with the U.S. Army Medical Command studying issues related to behavioral health among soldiers including food insecurity, substance misuse, intimate partner violence, and health disparities among LGBT service members. Previously, he served as the Lead Epidemiologist for the Los Angeles LGBT Center where his work focused on sexual health and disparities. Matt holds a PhD in Public Health and an MPH in Epidemiology, both from UCLA, and a BS in Microbiology from UC San Diego. We are happy to bring Epidemiology back into the EMPH curriculum.

We wish to thank **Dr. Jennifer Wortham** for teaching Healthcare Quality and Performance Management in the EMPH Program for the past 10 years. An EMPH graduate (Class of 2000), she has been involved with the program for many years and taught Financial Accounting and Marketing in the past. We wish her continued success.

We thank **Dr. Yvonne Flores** for teaching Global Health in the EMPH Program last year. We wish her much success this year as she takes a break to focus on her research, and we hope to welcome her back to our faculty at some point in the future.



UCLA MHA Professor
Christopher K. Lee



Congratulations to MHA Professor **Christopher K. Lee, MPH**, on the publication of his new book: “The Five Elements of Professional Networking,” which offers a framework for building relationships. The five elements include value, initiative, consistency, relatability, and credibility; and each chapter covers how a particular element applies to networking, how to develop it, and relevant ideas for personal reflection and application. A healthcare and technology strategist, Christopher has worked across the public health ecosystem from a community clinic to an academic medical center, and from an early-stage startup to a large health insurer.

EXECUTIVE MASTER OF PUBLIC HEALTH (EMPH) PROGRAM

UCLA Fielding School of Public Health's Executive MPH (EMPH) is a two-year graduate degree program. Students attend classes twice a month on Friday and Saturday, in person on the UCLA campus. Tailored for professionals invested in their careers, the EMPH program provides students the opportunity to work full-time while pursuing a rigorous graduate program.

Upon completion of the program, graduates are conferred a fully accredited Master of Public Health (MPH) degree with an emphasis in Health Policy and Management.



Johanna Arias Joins ExecHPM as EMPH Student Affairs Officer

We are thrilled to announce that Johanna Arias, M.Ed., has joined the Executive Programs Office in Health Policy and Management as the new Student Affairs Officer for the Executive MPH Program, effective September 2025.

Johanna recently graduated from the USC Rossier School of Education with a Master of Education in Educational Counseling and was awarded the university's prestigious Order of Arête distinction for her academic excellence and community leadership. She also holds a Bachelor of Arts in Public Policy from the University of California, Riverside.

In previous roles in higher education, including Sr. Student Affairs Coordinator at Chapman University School of Pharmacy and General Counseling at Los Angeles Trade Technical College, she has led programs supporting students, managed public engagement efforts, and contributed to equity-focused research and strategy.

As a Research Assistant at the USC Pullias Center for Higher Education, she contributed to national publications on the impact of men of color programs, using data to inform equity-focused practices and policy recommendations.

With a background in community outreach, policy communications, and student support, Johanna is passionate about building systems of opportunity and driving lasting change.

Passionate about empowering the next generation of healthcare professionals, Johanna offers guidance to applicants of the EMPH Program and supports current students, faculty, and alumni. She is the first point of contact for anyone with inquiries about the program or the admissions process and is happy to meet one-on-one with prospective applicants. She can be reached at joarias@ph.ucla.edu and [310-206-6834](tel:310-206-6834).

Welcome, Johanna!







Both EMPH Cohorts Came Together at Orientation 2025

EMPH Fall Quarter began on August 22nd when we welcomed our new cohort to the UCLA campus for the first time, at EMPH Orientation, immediately followed by Session 1. The returning Year Two students were invited to attend lunch to get to know the new cohort and say hello to faculty after working on their consulting projects over summer break.



Introducing the Class of 2027

We are pleased to introduce our new cohort: 12 new EMPH candidates representing 125+ years of collective experience in diverse areas including pediatrics, law, leadership, financial operations, patient advocacy, data analytics, project management, geriatrics, regulatory compliance, research, community health, transitional housing, health policy, infectious disease, addiction recovery, and cancer research.

- Devon Anderson
- Monique Araya, M.D.
- Lauren Garcia
- Kisa Hilliard
- Alfonso Iniguez
- Isabella McShane
- Blake Owens
- Joelle Ragland
- Andy Short (not pictured)
- Veronica Tayo
- Suini Torres
- Wei Zhao

Learn more about our current students on exechpm.ucla.edu.

EMPH Summer Consulting Projects: Class of 2026

For their capstone project, all EMPH students conduct an applied consulting project which they start in the summer following the first academic year in the program. Professor Mike Galper is currently leading EMPH Year 2 students in their consulting projects, outlined below.





Marina Martinez and Maite Medina have selected the State of Washington Department of Health to strategize vaccine planning.



Nicollette Doomany and Tiffany Liu (not pictured) are working with Avicenna Next (a consulting, research and development company dedicated to advancing innovative healthcare initiatives) to create a training program for community health workers on advocacy for safe water.





Zachary Morganstein and Sarah Hakakha have partnered with UCLA Emergency Medical Services (EMS) on benchmarking and analysis of the UCLA EMS system compared to other collegiate systems.



Alexis Osime and Kennedy Anderson have teamed with Claris Health to evaluate how to increase patient flow in their mobile clinic in Service Planning Area 5 (SPA 5). In the Los Angeles County healthcare system, SPA 5, also known as the West Service Planning Area, is a geographic region encompassing communities in West Los Angeles, including Beverly Hills, Culver City, Santa Monica, and surrounding areas. It's one of eight SPAs in the county; each designed to tailor health services to the specific needs of its residents.



Trishna Singh and Emily Brown are working with the UCLA Healing, Empowering, and Liberating (HEaL) Trauma Program to analyze the mental health referral process for trauma victims.





Maya Camacho and D'Artagnan DeBow, M.D., have teamed up with Olive View-UCLA Medical Center to identify key risk factors for Post Partum Hemorrhage (PPH) and evaluate the effectiveness of current risk screening tools.





Miguel Ramirez and Riu Zhao are working with UCLA Health to address how to improve communication and reduce anxiety related to diabetes/A1C testing results.

We look forward to the EMPH student presentations on Friday, November 14, 2025, where they share their findings in class to an audience that includes the preceptors, their cohort, and the first-year students, during Session 7 of Fall Quarter.

Next quarter, the students will complete a comprehensive business plan project that draws on the program's core business classes in marketing, finance, and strategy. Stay tuned!



EMPH Grad Dr. Cozzette Lyons-Jones Selected for FSPH Hall of Fame Award

Dr. Cozzette Lyons-Jones (EMPH '18), has been selected as a 2025 Fielding School of Public Health Hall of Fame inductee. Nominated by Avram Kaplan and Jessie Lee Sherrod for her demonstrated contributions to the field of public health, she was selected from a highly accomplished pool of alumni as a Hall of Fame Award inductee.

An accomplished Physician Executive with a diverse background spanning over 20 years in healthcare and managed care, Dr. Lyons-Jones serves as Chief Medical Officer at Watts Healthcare Corporation, a historic FQHC in Los Angeles.

Congratulations, Dr. Lyons-Jones.

Read more about her outstanding career accomplishments on ph.ucla.edu.

MASTER OF HEALTHCARE ADMINISTRATION (MHA)

UCLA's online MHA is a flexible graduate degree program. Graduates are conferred a fully accredited Master of Healthcare Administration (MHA) degree. Featuring two on-campus immersions and a capstone project, this flexible program offers most course content asynchronously, with the freedom to adjust the number of courses taken each quarter.

UCLA MHA

CAPSTONE PROJECTS

SUMMER 2025



Gabriela Goldberg



Mathew Aguilar

Mathew Aguilar and Gabriela Goldberg Share Their MHA Capstone Experience

One of the hallmarks of UCLA's MHA Program is the capstone project which students complete during Term 7 of the program. In this applied field project, the assignment is to design and conduct a project based on a health administration problem addressing the delivery, financing, and evaluation of healthcare administration services. Students prepare a consulting report and presentation for a letter grade.

We caught up with [Mathew Aguilar](#) and [Gabriela Goldberg](#), who just completed the coursework for their MHA degrees on September 12th—marking Summer Quarter their final quarter in the program—to learn more about their capstone experience.

Tell us about your MHA capstone project.

Mathew Aguilar: I partnered with Ventura County Public Health's Communicable Disease Division as a project intern. My capstone focused on creating a countywide measles preparedness and outbreak response protocol. This included developing workflows, CalCONNECT guidance, clinical tools, and communication templates to help strengthen coordination between public health, healthcare providers, and community partners.

Gabriela Goldberg: My capstone project focused on designing a Peer Litigation Support Program and education to provide emotional support for physicians involved in malpractice litigation. This work gave me insight into the breadth and complexity of creating a program that requires collaboration across multiple departments, including risk management, physician wellness, and leadership.

What is a key takeaway you have about the MHA capstone experience?

Mathew Aguilar: Public health is an essential part of healthcare. It may not be the most glamorous, but it is absolutely a calling. I was inspired by the passion and knowledge of everyone I worked with at Ventura County Public Health, and I hope to carry that same commitment forward in my career.

Gabriela Goldberg: A major lesson I learned was the importance of time management in balancing research, stakeholder input, and deliverables. I also enjoyed gathering data and analyzing results, especially when I could present findings using data visualization learned in prior coursework to highlight key patterns. A key takeaway from this experience is that successful programs require both vision and practicality. I also recognized the value of gaining stakeholder buy-in early, as their perspectives added credibility and strengthened the design.

Any advice for MHA Students who will be working on their capstone in the next few quarters?

Mathew Aguilar: 1) Start early if you can. I formally began my project a couple of months before the capstone quarter started, but in reality, I had been setting things up almost half a year in advance. That extra time gave me space to adjust when the work picked up, and I cannot imagine trying to build everything from scratch once the quarter began. Even with that head start, I still found myself working right up to the final week of deliverables.

2) Be very clear about your project goals. I thought I had narrowed mine down, and even then, the amount of work I needed to cover quickly became broader and more complicated than expected. If my scope had been any bigger, it would have been unmanageable. It is better to have a specific and focused goal that you can expand on, rather than something too ambitious that you struggle to finish.

3) Take notes or journal throughout the process. Do not just record the big milestones but also write down the small details and your day-to-day thoughts. Things like what you worked on, how you felt about a particular challenge, or even a random idea you had in the middle of the day. Those little notes can be incredibly valuable later. Some of my best insights for the consultation report came from small and almost insignificant things I experienced along the way, and I wish I had written down more of them instead of relying on memory.

Gabriela Goldberg: For future MHA students, my advice is to select a project that is manageable within a 10-week timeframe and begin planning before the capstone quarter. Line up stakeholders early, secure necessary data, and break the work into smaller, achievable steps. By accomplishing a lot of the legwork before the Capstone quarter began, I was not overwhelmed with the deliverables during the quarter. Above all, choose a topic you are passionate about—motivation makes the process more meaningful and the outcome more rewarding. Finally, I also welcomed input, critique, and guidance from Dr. Erskine, and I would encourage others not to be afraid of constructive feedback—it makes the final project stronger.

Anything else you'd like to share about your MHA capstone experience?

Mathew Aguilar: The ten weeks of the capstone somehow feel like both the longest stretch of the program and the fastest blur of deadlines. On one hand, the workload can feel heavy, and the days can drag. On the other hand, the weeks fly by, and the final deliverables arrive before you know it. The best thing you can do is trust your process, lean on your peers, and remind yourself that all the work you are doing has a real impact.

Thank you, Mathew Aguilar and Gabriela Goldberg, for sharing your MHA capstone experience!

SUMMER QUARTER 2025

∞

STUDENTS COMPLETE COURSEWORK FOR MHA DEGREES



Mathew Aguilar



Richard Aguilar



Brian Fong



Gabriela Goldberg



Jessica Graziano



John Jones



Parfait Migisha



Ginny Moreno Bartlett



Jose Orozco



Jeffrey Wong



Fielding School of Public Health

**Executive Programs in
Health Policy & Management**

Congratulations, MHA Graduates

The following students have just completed their coursework for their MHA degrees this Summer Quarter, our first group of students who will be participating in Commencement 2026 next June:

Mathew Aguilar, MHA; Ricardo Aguilar, MHA; Brian Fong, MHA; Gabriela Goldberg, MHA; Jessica Graziano, MHA; John Jones, MHA; Parfait Migisha, MHA; Ginny Moreno Bartlett, MHA; Jose Orozco, MHA; and Jeffrey Wong, MHA.

Welcome, New MHA Candidates

One of the highlights of UCLA's online MHA Program is the flexibility. Students can begin their graduate studies any quarter throughout the year. Congratulations to the following MHA candidates who were recently admitted into the program and began classes this Fall Quarter:

Sarkis Azatyan, Neil Azul, Elaina Barr, Alexis Bowser, Taylor Brown, Alondra Cervantes, Grace Chin, Luz Contreras-Caluya, Jerome de Vente, Claire Doggett, Sabrina Gill, Gabrielle Gonzales, Erica Ike, Cassie Johnson, Erin Joyce, Heesung Kim, Monika Kuzmicki, Shanna Lee, Kenneth Leung, Nallely Leyva, Melissa Lopez, Helen Meng, Julie Ng, Downey Nhim, Jessica Ordaz, Tracy Palomares, Thuy Pham, Aaron Raines, Tania Ramirez, Amanda Santangelo, Pablo Santos, Elizabeth Tapia, Kevin Tenkku, Brian Truong, and Jia Zhao.

We look forward to welcoming you to campus at an upcoming Immersion.

Alexis Bowser Awarded MHA Incoming Student Scholarship for Fall Quarter 2025



Each quarter, the MHA Program awards a \$10,000 scholarship to an incoming student, based on merit as well as need. Once students are notified that they've been admitted into the program, they are eligible to apply for the scholarship.

We are pleased to announce that the Fall 2025 MHA Incoming Student Scholarship awardee is Alexis Bowser. Alexis holds a Bachelor of Science in Health Information Management from Tennessee State University and is currently a Billing Specialist at Henry Ford Health in Troy, Michigan.

Welcome to the program, Alexis, and congratulations.



MHA Summer Quarter 2025 Immersion Recap

UCLA's MHA program is primarily an online program, with two immersive experiences built into the curriculum. Offered each quarter, MHA Immersion 1 and 2 brings students to campus twice during their studies for an invigorating schedule of professional development sessions, team-building exercises, and networking. Summer Immersion was held August 7-9 and Fall Quarter Immersion is scheduled for October 23-25.



Hospital Tours

Students visited Ronald Reagan UCLA Medical Center where Drew Weil, UCLA Health Senior Director of Hospital Operations, Integration & Activation Planning, gave a presentation and tour of the facility. They also visited the internationally renowned Cedars-Sinai Medical Center as well as Venice Family Clinic, one of the largest federally qualified health centers (FQHCs) in the United States.

MHA Program Director Dr. Laura Erskine worked with Immersion 2 students. Using a case study to prepare them for their consulting projects, they presented their team solutions in a mini case competition.



MHA Student Affairs Officer Jenna Mendoza led Immersion 1 in a Gallup StrengthsFinder workshop, providing action-oriented insights to help students reach their full potential. One participant shared that it was an insightful and thought-provoking activity, and that it was a “confidence booster” to learn how their innate personality traits can empower them to succeed.

After a dedicated resume workshop with Career Counselor Susie Yu, students worked one-on-one with her for feedback on their resumes. One participant said, “Susie Yu’s presentation was very informative. She was my favorite part out of all. She gave amazing, helpful information for a person like me looking to change positions within the healthcare industry.”





Team-Building Activity

ExecHPM Program Coordinator Sarah Tran facilitated a communications-focused team-building exercise in which MHA students worked together to construct a designated structure using Legos. Analyst, Developer, and Builder roles contributed to the success of the timed project.



One student shared, "I enjoyed the chicken model team-building activity because it highlighted how essential clear communication is for building effective teams."

MHASA Announcements

The Master of Healthcare Administration Student Association (MHASA) is a student-run organization at UCLA. Established under the advisement of the MHA Program Director, Dr. Laura Erskine, their goal is to foster growth and opportunity for collaboration among cohorts and to support MHASA members in achieving academic excellence and leadership skills.

MHASA currently has several board positions open.

Co-VP of Finance: open position

VP of Communications: open position

VP of Marketing: open position

To learn more about the MHASA Board opportunities, contact mhasa@g.ucla.edu and click [here](#) to apply.

Current MHASA Board:



[Angelica Brightmon](#), MHASA Co-President



[Stephanie Estrada](#), MHASA Co-President



[Annarose Etra](#), MHASA VP of Academic Excellence



[Henry Phan](#), MHASA Co-VP of Professional Development



[Rosie Oganessian](#), MHASA Co-VP of Professional Development



[Damicela Iraheta](#), MHASA VP of Equity, Diversity, and Inclusion
(This position will be open next quarter, as Dami will be completing her MHA.)



[Tim Murphy](#), MHASA VP of Finance

Follow UCLA MHASA on [LinkedIn](#) to stay up to date on events.

ALUMNI UPDATES

The UCLA Fielding School of Public Health Executive Programs in HPM

Alumni Network includes over 700 graduates committed to making a difference in the field of public health. Nothing brings us more joy than sharing your important work with our community.

EMPH

[Elizabeth Barrera, D.O., MPH](#) (EMPH '23) is now the Chief Medical Officer at Kowel Wellness Center.

[Erin Crapser, MPH](#) (EMPH '14) is now working on the product management team at Capital Group.

[Leon Cristobal, MPH](#) (EMPH '19) is starting a new position as an Oncology Sales Consultant at Bayer.

[D'Artagnan DeBow, M.D., MBA](#) (EMPH Candidate) is now the Senior Director, Clinical Development - Oncology at Crinetics Pharmaceuticals.

[Lauren Garcia](#) (EMPH Candidate) is now a Project Manager at UCLA Health.

[Melanie Huynh, MPH](#) (EMPH '23) is now the Manager of Clinical Affairs at Edwards Lifesciences.

[Smriti Kirubanandan, MPH](#) (EMPH '19) is now the Managing Director of Enterprise AI at Innovaccer.

[Pam Lowney, MPH](#) (EMPH '23) is now the CEO of Fistula Foundation.

[Marina Martinez](#) (EMPH Candidate) is now a Continuous Improvement Advisor at Rady Children's Hospital San Diego.

[Aamer Mumtaz, MPH](#) (EMPH '14) has joined Oak Development Group as Global Head of Strategy.

[Ben Olmedo, PA-C, MPH](#) (EMPH '23) is now a Healthcare Provider at Savie Health.

[Joelle Ragland](#) (EMPH Candidate) is now an Operations Supervisor at Cedars-Sinai.

[Suini Torres](#) (EMPH Candidate) is now a Laboratory Project Services Manager at IQVIA.

[Amy Truong, DTCM, MPH](#) (EMPH '23) has started her MBA at UCLA Anderson School of Management.

[Vanessa Villafuerte, MPH](#) (EMPH '25) is a broadcast journalist and is now the MedWatch Today Host at CBS47 and KSEE24.

MHA

[Mathew Aguilar, MHA](#) (MHA '25) is now a Project Intern at the Ventura County Health Care Agency.

[Alice Anaya, MHA](#) (MHA '25) started a new position as Program Development Owner - Leavitt School of Health at Western Governors University.

[**Nisha Balijepalli, MHA**](#) (MHA '24) is now an Associate Director of Client Insights at UnitedHealthcare.

[**Rachel Bellows, MHA, PT, DPT, OCS**](#) (MHA '24) is now a Physical Therapist at Hoag Health System.

[**Araxia Boghossian, MHA**](#) (MHA '24) is now an Admissions Coordinator at Longwood Management Corporation.

[**Vincent Brullo, MHA**](#) (MHA '24) is now the Senior Provider Relations Manager at Optum.

[**Breanna Castanon, MHA**](#) (MHA '24) was promoted to Patient Experience Specialist at Providence.

[**Uma Chandavarkar, M.D., MHA**](#) (MHA '24) is now a Healthcare Data Analytics Mentor at UC Davis Graduate School of Management.

[**Kelli DeJohn, MHA**](#) (MHA '25) has been promoted to Research Grant Specialist II at Cedars-Sinai.

[**Lauren Denton, MHA, MA**](#) (MHA '23) is now the Program Director of Strategic Research Programs at MD Anderson Cancer Center.

[**Brian Fong, MHA**](#) (MHA '25) is now Assistant Vice President of Revenue Cycle Management at El Camino Health.

[**Sydney Fong, MHA**](#) (MHA '23) is now the Chief of Staff to the Head of People & Talent at Greater Good Health.

[**Gabrielle Gonzales**](#) (MHA Candidate) started a new position as Senior Provider Network Administrator at AltaMed Health Services.

[**Iskuhi Hovsepyan, MHA**](#) (MHA '24) is now a Management Analyst at the Los Angeles County Department of Mental Health.

[**Kenneth Leung, M.D.**](#) (MHA Candidate) is now an Internal Medicine Physician at UCLA Health.

[**Trang Lieu, MHA**](#) (MHA '24) started an Administrative Fellowship in July at the City of Hope.

[**Adriana Lopez-Ospina, MHA**](#) (MHA '23) is now the Gallery and Events Manager at Old Town Artisan Studios in La Quinta, California.

[**Itzel Olivas, MHA**](#) (MHA '24) is now the HCBS Program Supervisor at United Cerebral Palsy of Central Arizona.

[**Allison Pascual, MHA**](#) (MHA '23) is now a Clinical Specialist at Fujifilm Healthcare Americas Corporation.

[**Celeste Quiroz, MHA**](#) (MHA '25) is now an Administrative Supervisor at San Bernardino County Department of Public Health.

[**Luis Enrique Rueda, MHA**](#) (MHA '25) is now in Quality Improvement at Universal Health Services, Inc. (UHS).

[**Olivia Salas-Tapia, MHA**](#) (MHA '24) is now the Program Manager of Hospital Partnerships at OneLegacy.

[**Nate Smith, MHA, RN**](#) (MHA '24) is now a Senior Director of Strategy/Execution, Consumer Experience Process Improvement at Kaiser Permanente.

[**Dominic Zavala, MHA**](#) (MHA '24) started a new position as Project Manager at Cedars-Sinai.

Please notify us of your professional updates for an opportunity to be featured. Just send us an email at exechpm@ucla.edu or feel free to DM or tag us on [LinkedIn](#).



The University of California is the best public university in the 2026 *U.S. News & World Report* Best Colleges rankings. **UCLA** is in the top 10 for best schools of public health and also ranked in the top 10 for Health Policy and Management.

The world-renowned **UCLA Fielding School of Public Health** harnesses the resources and expertise of a top-ranked U.S. public university to develop proactive leaders who will shape the future of healthcare.

Housed within the Fielding School, the Executive Programs Office in the Health Policy and Management Department offers two executive degree programs designed for working professionals: **Executive Master of Public Health (EMPH)** and **Online Master of Healthcare Administration (MHA)**.

Follow us on social to stay engaged with UCLA's Executive Programs in Health Policy and Management and our community.



UCLA Fielding School of Public Health, 650 Charles E Young Dr S, Los Angeles, CA 90095, United States, (310) 267-5600

[Unsubscribe](#) [Manage preferences](#)

UCLA Fielding School of Public Health
650 Charles E. Young Dr. S.
Los Angeles, CA 90095

Update your [Email Preferences](#) or [Unsubscribe](#)

verticalresponse
Marketing. Just Like That.