



Fielding School of Public Health

## Executive Programs in Health Policy & Management

### Quarterly Update – Spring 2025

The latest news about ExecHPM students, faculty, and alumni.



#### A LETTER FROM THE DIRECTOR

In these challenging times, I wish to express my sincerest appreciation for our corner of the world – the UCLA community of public health champions, scientists, and leaders inspires us every day. UCLA Chancellor Dr. Julio Frenk has been leading UCLA Connects: Listening Exercises and his [March 7th meeting](#) with the UCLA Fielding School of Public Health was encouraging. It was wonderful to come together as a community and we are inspired by Dr. Frenk's energy, dedication, and leadership.

We are coming up on the 30th anniversary of the EMPH program and have been reaching out to graduates across all cohorts. The response has been so heartening. Graduates from the last three decades have expressed interest in mentoring, getting involved in alumni events, and serving as preceptors for summer consulting projects. I've been so grateful for the outpouring of interest. More to come on this huge milestone for the EMPH program.

Each year during Winter Quarter, the second-year EMPH students complete a business plan related to public health and present it to their peers in front of a panel

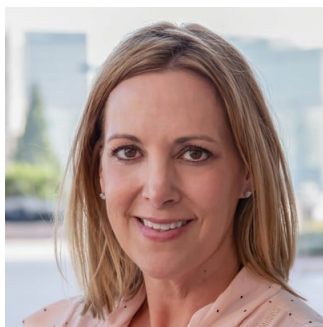
of industry judges. I'd like to thank our judges and alumni mentors who worked with our students during this important project. Your expertise and passion for the program is so inspiring. The business plans showcased ground-breaking healthcare ideas, and I'm so proud of the hard work and innovation from the Class of 2025.

Each quarter we have a group of MHA students who complete their capstone project. I'd like to congratulate them on their findings, a testament to honed insights, knowledge, and passion for public health. In this issue, we share the capstone experience from three students. Don't miss it.

The [HPMAA "Leaders of Today, Leaders of Tomorrow" Annual Awards Dinner](#) is one month away, coming up on Tuesday, May 20th, where Dustin Corcoran, MBA, Chief Executive Officer of the California Medical Association, will be honored as the Leader of Today Awardee. We are excited to say that our very own Dr. Leah Vriesman has been selected as the 2025 Ira Alpert Service Awardee. We are looking forward to celebrating these healthcare leaders at the dinner, honoring our ExecHPM graduates and those who will be joining the honors societies of Delta Omega and Upsilon Phi Delta, and recognizing the EMPH Sinaiko Business Plan Awardees, the Ann G. Quealy Scholarship Awardee, and the MHA Outstanding Student Award. It's going to be a great evening. As a reminder, all those eligible to participate in the 2025 Commencement receive complimentary admission. I encourage you to attend.

Wishing everyone a successful spring quarter and you'll be hearing from us again in July with our Summer Quarterly Update.

All my best,



Kyle Sullivan, MSW  
Director, Executive Programs in HPM  
Interim Director, EMPH Program

---

## IMPORTANT DATES

## Info Sessions

Please spread the word about our upcoming online Info Sessions. It's a great opportunity for interested applicants to learn about our programs in a live Q&A webinar that covers program curriculum, admissions requirements, and application materials.

### **EMPH:**

Wednesday, May 7, 5:00pm PT

[REGISTER](#)

### **MHA:**

Tuesday, June 24, 12:00pm PT

[REGISTER](#)

### **EMPH Application Review:**

Thursday, May 1, 2025

We will accept applications through July 31st.

Review the EMPH [Admissions Requirements](#).

Start or complete your EMPH application on the [UCLA Grad Portal](#).

### **2025 ExecHPM Grad Luncheon and Commencement:**

Friday, June 13, 2025

### **MHA Spring Quarter:**

Classes began Monday, March 31, 2025

### **MHA Spring Quarter Immersion:**

Wednesday, April 23 - Saturday, April 26, 2025

Reminder: MHA Immersion 1 and 2 are required courses in the curriculum. You must enroll in the course in order to participate.

### **MHA Summer Quarter:**

Application Deadline is

Monday, May 19, 2025. [APPLY NOW](#)

Classes begin Monday, June 30, 2025

---

YOU ARE CORDIALLY INVITED TO THE

## Leaders of Today, Leaders of Tomorrow

ANNUAL AWARDS DINNER

**Tuesday, May 20, 2025**

**VIP Reception: 5:00 PM PT**

**General Reception: 6:00 PM PT**

**Awards Dinner: 7:00 PM PT**

**UCLA Meyer and Renee  
Luskin Conference Center**

For more information, please visit  
[www.uclahpmaa.com](http://www.uclahpmaa.com).

### This Year's Awardees:



**Leader of Today Awardee**

Dustin Corcoran MBA;  
Chief Executive Officer  
California Medical Association



**Ira Alpert Service Awardee**

Leah J. Vriesman PhD, MHA, MBA;  
Associate Dean, Academic &  
Faculty Affairs  
UCLA Continuing Education &  
Extension  
Professor, Fielding School of  
Public Health

### "Leaders of Today, Leaders of Tomorrow" Annual Dinner

Tuesday, May 20, 2025, 5:00 PM

2025 Leader of Today Awardee:

Dustin Corcoran, MBA, Chief Executive Officer of the California Medical Association

2025 Ira Alpert Service Awardee:

Leah J. Vriesman, Ph.D., MHA, MBA, Associate Dean of Academic & Faculty Affairs at UCLA Extension and Professor at the UCLA Fielding School of Public Health's Department of Health Policy and Management

For the past three decades the HPMAA has been honoring a "Leader of Today" as well as the FSPH Health Policy and Management graduating class, the "Leaders of Tomorrow," during an annual dinner widely attended by healthcare professionals from throughout the U.S.

We are looking forward to celebrating healthcare leaders at the dinner, honoring our ExecHPM graduates and those who will be joining the honors societies of Delta Omega and Upsilon Phi Delta, and recognizing the EMPH Sinaiko Business Plan Awardees, the Ann G. Quealy Scholarship Awardee, and the MHA Outstanding Student Award.

As a reminder, all those eligible to participate in the 2025 Commencement receive complimentary admission.

### [TICKETS](#)

---



### **Paul Torrens Health Forum Committee**

The Paul Torrens Health Forum Committee is looking for new members to join for the 2025-2026 academic year. Committee members drive content and planning for all Paul Torrens Health Forum sessions.

Key responsibilities:

- Participate in committee planning meeting(s)/call(s).
- Brainstorm topics and potential speakers for sessions.
- Organize or co-organize content (topic/speakers) for one Paul Torrens Health Forum Session every academic year.
- Promote/share programming with your professional networks.
- Attend at least two Health Forum sessions every academic year.

If you are interested in joining the Paul Torrens Health Forum Committee, please send an email to Dr. Laura Erskine, Director of the Center for Healthcare Management at [lerskine@ucla.edu](mailto:lerskine@ucla.edu). For more information, click [here](#).

---

## **FACULTY**

Executive HPM draws on the distinguished faculty, programs, and academics of the

nationally renowned UCLA Fielding School of Public Health. Courses are taught by leading practitioners and researchers in the field of public health, health policy, and healthcare management, as well as faculty from UCLA's other graduate schools and management-related fields. Their expertise spans clinical practice, applied research, policy analysis, entrepreneurship, and consultation at the local, national, and international level.

---



### **Dr. Leah Vriesman Honored as 2025 Ira Alpert Service Awardee**

Congratulations to [Dr. Leah Vriesman](#) who will be honored as this year's recipient of the Ira Alpert Service Award at the [Leaders of Today, Leaders of Tomorrow Annual Dinner](#) on May 20th. We are thrilled to celebrate her lasting contributions to developing healthcare professionals.

A passionate educator and brilliant leader, Dr. Vriesman contributed substantially to the establishment of the Executive MPH program in the mid-1990s, under the direction of Dr. Paul Torrens, and served as the Executive Director of EMPH for 11 years until 2022. Building on her commitment to advancing public health education, Dr. Vriesman identified a critical gap in healthcare leadership training, which led her to champion the creation of the first MHA program in the UC system, in 2019. She launched the program in 2021, and since then over 100 healthcare leaders have earned their MHA degree at UCLA.



Now the Associate Dean for Academic and Faculty Affairs with UCLA Extension, she continues to teach in the EMPH and MHA programs and inspire countless students to pursue impactful careers in health policy and management.

Dr. Vriesman's dedication to teaching, tireless mentorship, and visionary leadership have left a lasting mark on our programs and students. Thank you and congratulations, Dr. Vriesman. We look forward to the celebration!

*Ira Alpert (Class of 1966) created the Health Policy and Management Department's first alumni association. Now 1,000+ members strong, the HPM Alumni Association (HPMAA) honors Mr. Alpert's effort and contribution by granting the Ira Alpert Service Award each year to an individual who has helped sustain, grow and broaden the leadership role of the Association.*

---



### **UCLA MPH Alumnus Seth Lake Now Teaching MHA Capstone**

We welcomed [Seth Lake, MPH](#), to the MHA faculty this quarter, teaching HLT ADM 400: Applied Field Project.

A dedicated healthcare professional with a strong background in patient experience, Seth currently serves as the Manager of Patient Experience for USC Care & Ambulatory Care Services at Keck Medicine of USC, overseeing various programs aimed at enhancing patient satisfaction across 100+ outpatient clinics. His previous

roles at Cedars-Sinai Medical Center and Cedars-Sinai Marina del Rey Hospital involved leading multiple data-driven projects and programs to improve patient experience across various clinical settings.

Seth received his Master of Public Health in Health Policy and Management from UCLA in 2019 and a Bachelor of Science in Neuroscience from UC Riverside in 2015.

The MHA capstone assignment is to design and conduct a project based on a health administration problem addressing the delivery, financing and evaluation of healthcare administration services. Students prepare a consulting report and presentation for a letter grade.



### **Dr. Julie Elginer is New Board Member at Dental Hygiene Board of California**

[Dr. Julie Elginer](#) has been appointed by the Speaker of the California Assembly Rob Rivas to a new position as Board Member at Dental Hygiene Board of California. In that capacity, she will provide oversight of the nearly 22,000 licensees through upholding education requirements, developing the law and ethics exam, promulgating regulations, establishing and maintaining fees and more.

This is her second statewide appointment and her first through the California



legislature.

---

## EXECUTIVE MASTER OF PUBLIC HEALTH (EMPH) PROGRAM

---



### **Congratulations to 2nd Year EMPH Students on Their Business Plan Presentations**

During the Winter Quarter in the second year of the program, EMPH students complete a comprehensive business plan project that draws on the program's core business classes in marketing, finance, and strategy.

The project provides a rewarding opportunity for students to work with alumni mentors and synthesize their academic learning and professional experience to address real-world issues and opportunities.

Congratulations to this year's teams who presented their plans on March 7th to a panel of guest judges who are leaders in healthcare. A special thank you to our EMPH alumni mentors (all of whom are past winners of the EMPH Sinaiko Business Plan Award) who guided the students through this milestone project, the culmination of their graduate school studies.

Eunice Ninet and Lisa Edwards (Agricare safety backpacks for farmworkers) mentored by Zulay Carrilo (EMPH '20), Manager of Community Resource Center, L.A. Care Health Plan; and Jonathan Vargas (EMPH '20), Sr. Performance Improvement Consultant, Cedars-Sinai

Elías Rodríguez and Vanessa Villafuerte (Salud en Casa urgent care for kids, at home) mentored by Ben Olmedo (EMPH '23), Associate Professor, AT Still University, College of Healthy Communities, CCPA Program; and Angela Castro (EMPH '20), Policy Analyst, Washington State Department of Commerce

Dayanara Nieto Flores, Daisy Wang, and Nikki Morales (Beyond Feet, augment patient care through social services) mentored by Katie Payne (EMPH '22), Toxicity Program Development Manager, Nautilus Environmental, Inc.; Chris Chin (EMPH '21), Manager of Epic Ambulatory and Population Health, MemorialCare; and Melissa Moore (EMPH '21), Heart and Lung Transplant Nursing Manager, UCLA Health

Alvin Wong and Alan Rozet (OD Zero, a vending machine that helps prevent fatal overdoses) mentored by Natalie Yragui (EMPH '20), Business Consultant, Kaiser Permanente Bernard J. Tyson School of Medicine; and Analiese Castro (EMPH '20), Associate, Hooper, Lundy & Bookman, P.C.

Ray Chandler mentored by Amy Truong (EMPH '23), Acupuncturist, City of Hope; and Rex Hamano (EMPH '23), Investor, Executive Management Team, Special Service for Groups

Thank you to our guest judges for their time, invaluable feedback, and industry insights:

Erica McCall, DNP, MPH, MSN, Senior Nurse Anesthetist at UCLA Health; Assistant Program Director, USC Program of Nurse Anesthesia, Keck School of Medicine of USC

Martin Perez, MPH, Director, Finance - Network Strategy, Optum

Jennifer Fagen, MS, Marketing and Communications Executive, Adventist Health

Stephanie Wally, MPH, Director Program Management, Strategy Execution, Kaiser Permanente South Bay

Michelle Chen, MBA, MPH, Director, Strategy & Operations, Strategy&

The winning team will be presented with the EMPH Sinaiko Business Plan Competition Award at UCLA FSPH Health Policy and Management Alumni Association's (HPMAA) "Leaders of Today, Leaders of Tomorrow" Annual Gala Dinner on May 20th.

---





### **Volunteering at Project Angel Food**

We kicked off Spring Quarter on March 21st with an EMPH Session 1 optional Volunteer PD Session at Project Angel Food in Downtown Los Angeles. It was wonderful to come together and give back to our community. Providing opportunities for students to bond is an integral part of the ExecHPM Office and EMPH Program.

Project Angel Food nourishes the health and spirit of vulnerable people facing critical and life-threatening illness, by preparing and delivering medically tailored meals with love, care and dignity.

Pictured | Kyle Sullivan, Director of the Executive Programs and Interim Director of the EMPH Program; Julie Carafelli, Assistant Director of the Executive Programs; Sarah Tran, Program Coordinator of the Executive Programs; and EMPH Students Maite Medina, Marina Martinez, Emily Brown, and Trishna Singh.

---



### **Erin Quinn Joins CRI-Help as Director of Quality and Innovation**

Erin Quinn (EMPH '22) joined fellow alumnus Brandon Fernandez (EMPH '20), CEO of CRI-Help, in December as the Director of Quality and Innovation at CRI-Help, after a ten-year career at David Geffen School of Medicine at UCLA (DGSOM), the last seven of which she served as Director of Safety, Emergency Preparedness and Building Operations. Prior to DGSOM, Erin worked at Johns Hopkins Hospital as Lead Critical Care Technician.

Erin's career move is a testament to the strong connections created in the ExecHPM community.

---





### **EMPH Alumni Panel Professional Development Session**

First year EMPH students are about to embark on their Applied Consulting Projects as they research organizations in an area of interest to them. One of the highlights of the program, the project gives students real-world applied experience in the healthcare field. They work with a preceptor who identifies and oversees a specific problem at their organization and provides guidance to the students who serve as consultants to solve that organizational or managerial problem. Many alumni have reached out to the Executive Programs Office with possible projects at their organizations, and we are looking forward to matching current EMPH students with alumni preceptors.

As the students get closer to choosing their organizations, Professor Mike Galper put together a Professional Development session on Friday, April 18, with a special group of alumni panelists: [Amy Truong, DTCM, MPH](#) (EMPH '23), Acupuncture at City of Hope, and four grads from the Class of 2022, [Noel Franco, MPH](#), Manager, MN Program Development at Cedars-Sinai, [Jessica Thies, MPH, RN](#), Mobile Clinic Manager at City of Hope, [Erin Quinn, MPH](#), Director for Quality and Innovation at CRI-Help, and [Kyle Horne, MPH, CNP](#), Program Manager at CHLA.

The first part of the evening was moderated by Mike Galper as the graduates described their summer consulting projects. They offered advice and talked about how they secured their projects, the challenges they encountered, and what they learned.



The second part of the session was moderated by [Julie Carafelli, MPH](#) (EMPH '21), Assistant Director of the Executive Programs in Health Policy & Management, as she asked the graduates about their professional post-graduate experience. It was a great opportunity for EMPH students to network with leaders in healthcare and learn from their expertise.

Thank you to our dedicated alumni community. Your passion and energy is inspiring. Your gift of knowledge and time is so very appreciated.

---

## MASTER OF HEALTHCARE ADMINISTRATION (MHA)

---







### **MHA Winter Quarter 2025 Immersion**

Immersion is held each quarter and brings online students to campus twice during their studies. We hosted MHA candidates on campus, February 26 – March 1, for an invigorating schedule of professional development sessions, team-building exercises, and networking.

Students visited Venice Family Clinic, one of the largest federally qualified health centers (FQHCs) in the United States, and internationally renowned hospital Cedars-Sinai where they met with UCLA grads for a tour and presentation.

In a volunteer activity, both Immersion 1 and Immersion 2 students met with MHA Student Affairs Officer Jenna Mendoza and ExecHPM Coordinator Sarah Tran to assemble toiletry and clean home kits donated by the UCLA MHA program, to benefit the Downtown Women's Center (DWC), the only organization in Los Angeles focused exclusively on serving and empowering women and gender diverse individuals experiencing homelessness. Their Day Center provides daily access to showers for women and gender diverse individuals experiencing homelessness, making toiletry kits an everyday need for the participants that they serve.

In addition, clean home kits provide DWC residents with essential cleaning supplies as they move from homelessness into housing, ensuring that they are able to create a safe space to call home.

"Taking part in this initiative opened the door to learning more about the incredible work DWC does," MHA student Jessica Graziano shared in a LinkedIn post. "I'm grateful for the opportunity to contribute, even in a small way, and to spread awareness of their impact."

MHA Director Dr. Laura Erskine worked with Immersion 2 students. Using a case study to prepare them for their consulting projects, they presented their team solutions in a mini case competition. She also led Immersion 1 in a *StrengthsFinder* workshop, providing action-oriented insights to help students reach their full potential.

*REMINDER: MHA Immersion 1 and 2 are required courses in the curriculum. Students must enroll in the course in order to participate.*

---

## **Welcome New MHA Candidates**

One of the highlights of UCLA's online MHA Program is the flexibility. Students can begin their graduate studies throughout the year. Congratulations to the following MHA candidates who recently enrolled in the program and began classes this Spring Quarter, on March 31st. We look forward to welcoming you to campus at an upcoming Immersion.

### **Spring 2025 Starts**

Alson Carey  
Jessica Cervantes  
Grace Encarnacion Chin  
Matthew Ennen  
Orlando Garcia  
Sam Kim  
Danna Maslamani  
Michael Morales  
Joanna Oppenheim  
Matthew Reel  
Tejinder Scheurer  
Toko Tanaka  
Betty Zhu

---

## **MHA Capstone Projects**

Congratulations to all of the MHA students who just completed their capstone project during Term 7 of the program. In this applied field project, taught by [Professor Seth Lake, MPH](#), the assignment is to design and conduct a project based on a health administration problem addressing the delivery, financing and evaluation of

healthcare administration services. Students prepare a consulting report and presentation for a letter grade.

We caught up with three students who Professor Seth Lake said did a fantastic job on their consulting projects, to learn about their experience.



### **Brandy Duong, MHA Candidate**

My capstone project was about improving access to in-network durable medical equipment (DME) to promote patient access to care. From a payer's perspective, the goal in my Provider Contracting department is to fulfill network adequacy and ensure that all gaps in patient care and services are reduced. My main objective in my capstone project focuses on expanding DME services in my organization's network while reducing the use of out-of-network vendors. This helps reduce costs and delays of care.

*What is a key takeaway you have about the experience?*

My key takeaway from my capstone experience was that it was crucial to have a preceptor with access to the data I needed to complete my research. Finding the right data for such a large-scale project is difficult without proper support from your preceptor. The success of my project was due to having the right guidance and support from my preceptor. As such, I would recommend my peers to continuously communicate with your preceptor on a regular basis about your project so they can help guide and provide you with the right tools to succeed.



**Lindsey Borrego, MHA Candidate**

My capstone project examined the relationship between philanthropy staff and clinical/administrative staff at an organization, ultimately providing tactics that the organization can use to foster this crucial relationship. I appreciated how I was able to tailor my project to strengthen my expertise in healthcare philanthropy, a topic I am deeply passionate about.

*What is a key takeaway you have about the experience?*

A key takeaway is that I have the knowledge and tools to confidently evaluate a real-world problem and provide tangible, data-driven solutions to address it. This project has allowed me to foster my critical thinking, problem-solving, and research skills, all of which are necessary to ensure I am a successful leader in my profession.

*Anything else you'd like to share?*

Overall, I had a great experience and enjoyed having the opportunity to work with several talented individuals whom I may not have ever worked with in this capacity otherwise. Because of this class, my professional network is larger and my existing relationships with certain professionals in this industry are much deeper.





### **Gene Salgado, MHA Candidate**

My capstone project focuses on reducing inappropriate emergency department (ED) utilization among high utilizers. ED visits are a high-intensity service and high-cost drain on the health care system and patients. Specific ED incidents may be attributed to avoidable or treatable conditions.

#### *What is a key takeaway you have about the experience?*

Extensive research from credible sources is important to find out the underlying cause of the issue. High Emergency Department (ED) utilization rates are a common issue in every managed care or health insurance plan. The importance of a project like this is not just to educate the patients on how to utilize resources available for them to navigate the healthcare system, as ED visits are very costly and can hurt the healthcare organization budget that could have been more allocated to other programs that will be beneficial to the patients. In the process, I've learned that motivational interviewing, patient teaching, and addressing the social determinants of health are essential. These are the keys to reducing inappropriate ED visits and improving patient outcomes. It is crucial to reduce the burden on the ED and to motivate and commit to improving patient outcomes.

#### *Anything else you'd like to share?*

Both Dr. Erskine and Professor Lake are awesome. I had Professor Seth Lake last quarter for my capstone project. I appreciate that he answered questions about the project deliverables during Synapse cafes. My recommendation to the students is to

follow the rubric, schedule your 1:1 with the professor early on so you can discuss your capstone project and receive feedback, and send your draft to your preceptor at least one week before the project due date to give them ample time to review your project and provide feedback if needed.

---

### **Congratulations MHA Graduates, Winter Quarter 2025**

And finally, we wish to congratulate the students who just completed their courses at the end of Winter Quarter, on March 21st. Your hard work and passion, Class of 2025, have earned you your Master of Healthcare Administration degree. We can't wait to celebrate this important milestone with you at the Graduation Ceremony in June, and we look forward to seeing where you take your MHA degree:

Amanda Coronado, MHA  
Shayok Dutta, MHA  
Lisa Gerstenberger-Heil, MHA  
Anusha Gunaratne, MHA  
Austin Leshner, MHA  
Lea Macias, MHA  
Araksya Minasyan, MHA  
Lily Nguyen, MHA  
Saumya Nigam, MHA  
Edna Smith, MHA  
Shantel Velasquez, MHA  
Dominic Zavala, MHA

### **MHASA Announcements**

The MHASA Board has three positions currently open:

[Co-VP of Professional Development](#)

[VP of Academic Excellence](#)

VP of Marketing

Click [here](#) to apply and contact [mhasa@g.ucla.edu](mailto:mhasa@g.ucla.edu) with inquiries.

Become an MHASA member for exclusive access to student led podcasts, healthcare leadership panels, and networking opportunities. And follow UCLA MHASA on [LinkedIn](#) to stay up to date on events.

MHA Jacket Pickup:

Please visit the Executive Programs Office by May 16 to sign for your pre-ordered MHA jacket and pick it up (hours: M-F, 9am - 4pm).

Location: UCLA Fielding School of Public Health

650 Charles E. Young Dr. South, CHS 31-299B

Please bring a copy of your purchase confirmation email or receipt (digital or printed) and a valid ID.

If you are unable to make the pick-up, please reach out to [mhasa@g.ucla.edu](mailto:mhasa@g.ucla.edu) for alternative dates and times with the subject line: "Merch Pick-Up Inquiry"

---

## ALUMNI UPDATES

---

The UCLA Fielding School of Public Health Executive Programs in HPM Alumni Network includes over 700 graduates committed to making a difference in the field of public health. Nothing brings us more joy than sharing your important work with our community. Please notify us of your professional updates for an opportunity to be featured. Just send us an email at [exechpm@ucla.edu](mailto:exechpm@ucla.edu) or feel free to DM or tag us on [LinkedIn](#).

### EMPH

[Michelle Anne Bholat, MD, MPH](#) (EMPH '97) is the new chair of the Department of Family Medicine at UC Riverside School of Medicine.

[Tim Burke, MPH](#) (EMPH '05) has joined Radiology Partners as Senior Vice President and Chief Compliance Officer.

[Angela Castro, MPH](#) (EMPH '20) is now a Policy Analyst at Washington State Department of Commerce.

[Sunny Gill, DrPH](#), who started in the EMPH program in 2007 and transferred to the DrPH at UCLA FSPH at the same time as Dr. Julie Elginer, is now the Sr. Manager Quality - Combination Products, Compliance at Gilead Sciences.

[Rey Gonzales, MD, MPH](#) (EMPH '99) recently started Doctoral Research at UNM Sandoval Regional Medical Center.

[Lance Brett Hall, MPH](#) (EMPH '23) lands new role at American Academy of Communication in Healthcare (ACH).

[Carinne Hawley, MPH](#) (EMPH '08) obtained a new certification in the Health Coach Training Program from Institute for Integrative Nutrition, and launched Empowering Smiles, a virtual oral health coaching platform.

[Vasco Deon Kidd, DHSc, MPH, MS, PA-C](#) (EMPH '08) has a new position as Director of Advanced Practice Operations at UC Davis Health Systems.

[Jonathan Martinez Vargas, MPH](#) (EMPH '20) has been promoted to Senior Performance Improvement Consultant at Cedars-Sinai.

[Aamer Mumtaz, MBA, MPH](#) (EMPH '14) recently became an Angel Investor at COREangels Atlantic.

[Dayanara Nieto](#), EMPH Candidate, is now a Health Science Specialist at the U.S. Department of Veterans Affairs.

[Katie Payne, MPH](#) (EMPH '22) is now the Toxicity Program Development Manager at Nautilus Environmental, Inc.

[Erin Quinn, MPH](#) (EMPH '22) is now the Director for Quality and Innovation at CRI-Help, Inc.

[Jamie Ruiz, MPH](#) (EMPH '24) is now a Program Manager at Cedars-Sinai.

[Raina Sinha, MD, MPH](#) (EMPH '11) is now a Congenital Heart Surgeon at Methodist Children's Hospital in San Antonio, Texas.

[Arlin Villa, MPH](#) (EMPH '07) was recently promoted to Market Leader at Concert Health.

[Vanessa Villafuerte](#), EMPH Candidate, is a broadcast journalist and has secured a new position as MedWatch Today Host at CBS47 and KSEE24.

[Jose Yongco, MD, MPH, MSHI, FACP, FHM](#) (EMPH '09) is now the Medical Director and Partner at Vituity.

## **MHA**

[Zachary Ambroziak](#), MHA Candidate, is a Healthcare Economics Consultant at UnitedHealth Group.

[Ruben Astorga](#), MHA Candidate, is now a Clinic Operations Manager at Savas Health.

[Efrain Avelar](#), MHA Candidate, is newly certified to be an Administrator for Residential Care Facilities for the Elderly.

[Lindsey Berman](#), MHA Candidate, is now the Associate Vice President of Health Policy at Children's Hospital Los Angeles (CHLA).

[Judith Calderon](#), MHA Candidate, is now a Registered Nurse at California Rehabilitation Institute.

[Abigail Adriana Ceja-Cerezo, MHA](#) (MHA '24) is now an Administrative Assistant at UCLA Health.

[Hannah Churchill, MHA](#) (MHA '24) is now an Executive Support Analyst to the Dean at Betty Irene Moore School of Nursing at UC Davis.

[Marjan Dehghanian](#), MHA Candidate, moved into a new position at UCLA Health as a Practice Manager.

[Dustin Hudak, MHA](#) (MHA '23), is now the Assistant Chief Financial Officer at MountainView Hospital in Las Vegas, Nevada.

[Alyssa Huang](#), MHA Candidate, is now a Care Supervisor at Homebridge, Inc.

[Liza Johns](#), MHA Candidate, was promoted to Division Administrator of Children's Surgery at VCU Health.

[Ellie Kye](#), MHA Candidate, is now a Senior Finance Manager, Immunology Revenue Planner (Enbrel) at Amgen.

[Stephanie Morillo, MHA](#) (MHA '23) is now an Associate Research Administrator with Keck Medicine of USC.

[Peter Oishi, MD](#), MHA Candidate, is the Associate Chief Medical Officer at UCSF Benioff Children's Hospitals.

[James Papier, MHA](#) (MHA '24) has a new position as a Retail Health Area Manager at Indigo Health.

[Henry Phan](#), MHA Candidate, is in a new position at Providence as Program Manager and was recently appointed as VP of Professional Development for the UCLA MHASA Board.

[Celeste Quiroz](#), MHA Candidate, is now the Fiscal Operations Supervisor at Arrowhead Regional Medical Center.

[Christopher Sherwood, MHA](#) (MHA '23) is now the Member Outreach and

Onboarding Manager at California Autism Center & Learning Group.

[Eriyanna Sioson-Archer](#), MHA Candidate, is now a Human Resources Generalist at UCLA Health.

[Joyce Thai](#), MHA Candidate, is a Territory Manager at Byram Healthcare.

---

*U.S. News & World Report* has announced their 2025 best college rankings, and we are proud to say that for the 8th year in a row, UCLA has been named the #1 public university. We are in the top 10 for best schools of public health and also ranked in the top 10 for Health Policy and Management.

The world-renowned **UCLA Fielding School of Public Health** harnesses the resources and expertise of the #1 public university in the U.S. to develop proactive leaders who will shape the future of healthcare.

Housed within the Fielding School, the Executive Programs Office in the Health Policy and Management Department offers two executive degree programs designed for working professionals: **Executive Master of Public Health (EMPH)** and **Online Master of Healthcare Administration (MHA)**.

*Follow us on social to stay engaged with UCLA's Executive Programs in Health Policy and Management and our community.*



UCLA Fielding School of Public Health, 650 Charles E Young Dr S, Los Angeles, CA 90095, United States, (310) 267-5600

[Unsubscribe](#) [Manage preferences](#)

UCLA Fielding School of Public Health  
650 Charles E. Young Dr. S.  
Los Angeles, CA 90095

Update your [Email Preferences](#) or [Unsubscribe](#)

**verticalresponse**  
Marketing. Just Like That.